



**TTP**

SPATIAL AND GRAPHIC DESIGN  
FOR EVENT AND EXPERIENCE

**SPACE & ART**

HERE WE WILL BRING YOU TO FEEL IT, AND SEE HOW THESE  
SELECTS AFFECT YOUR SENSE FOR PARTICULAR EVENTS. MORE  
INCLUDING YOUR SENSE FROM OUTSIDE TO INSIDE WILL  
BE RELEVANT. THE ENTIRE AREA IS THE BIGGEST HIT  
IMPACTING WITH TO CREATE MOST ATTENTION TO AUDIENCE.

**SPACE & ART TTP**

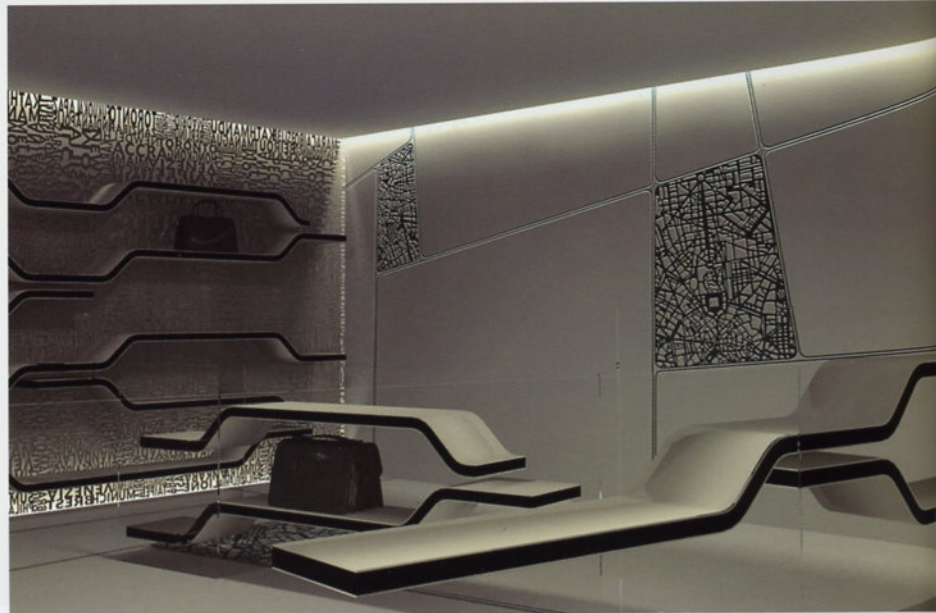
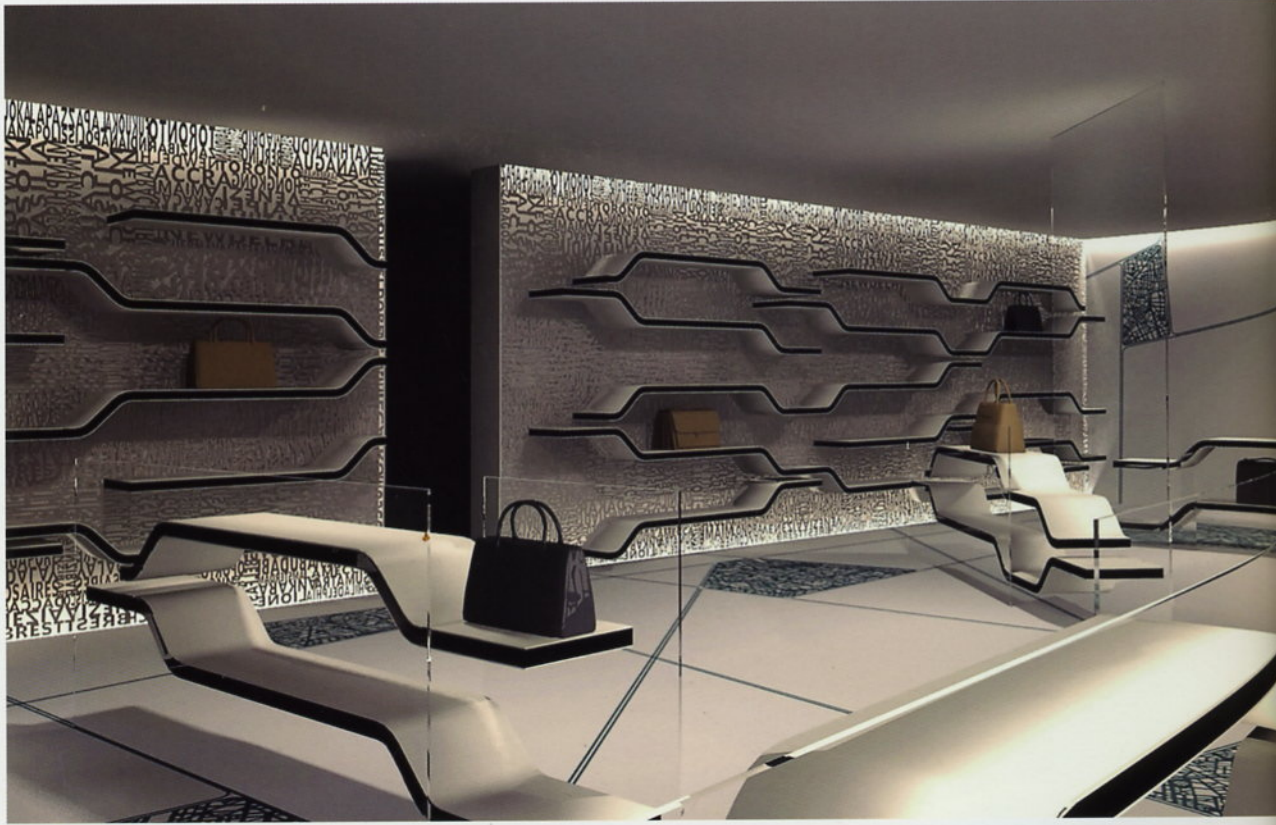
space & art® -- where spatial design is our theme  
within space to make the whole event outstanding and turn into exceptional  
from exterior to interior and be recovered. The entire area is  
audience, here we will bring you to feel it, and

**Title**  
Mandarina Duck  
Concept for renewal of shop's image

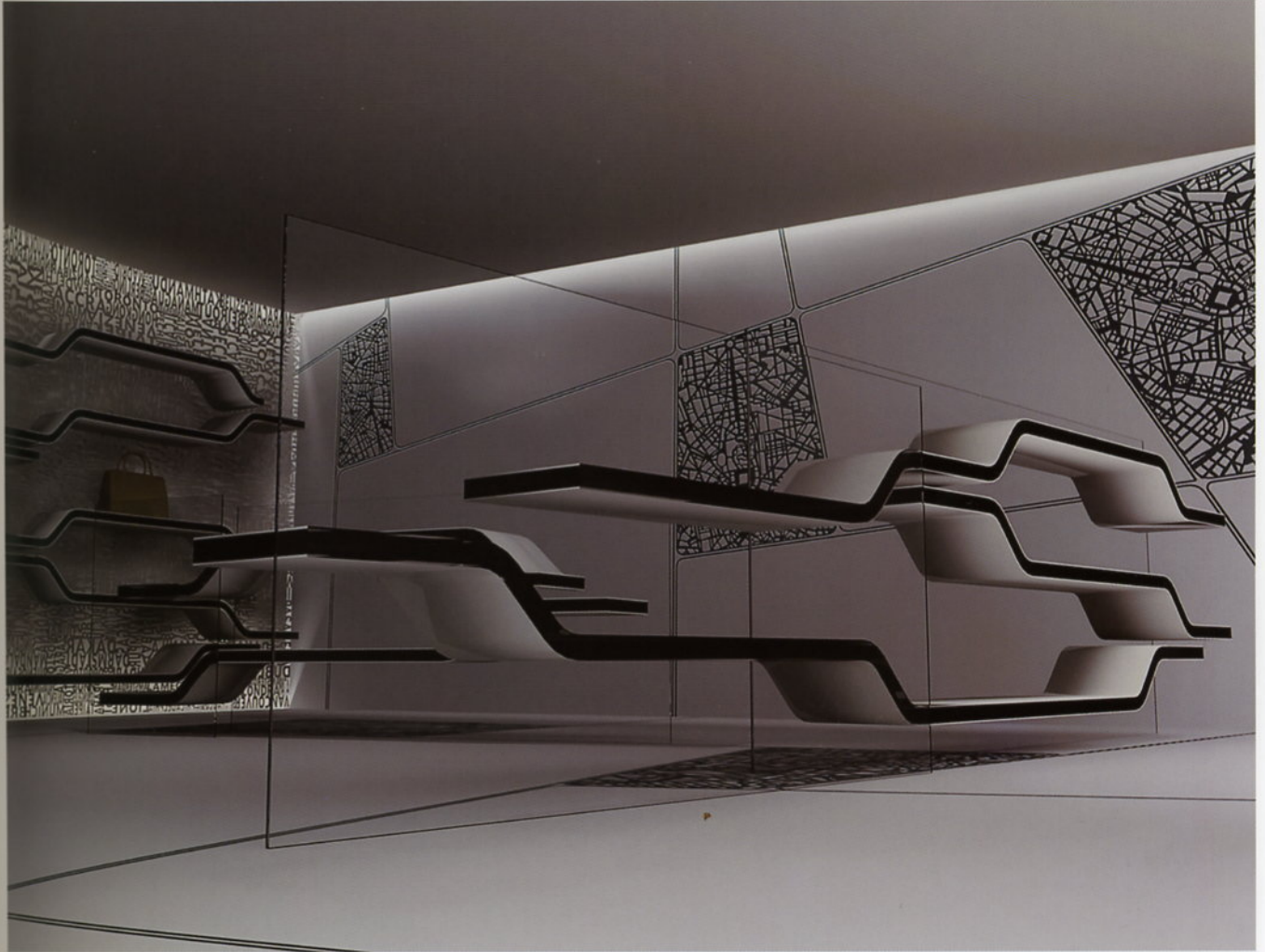
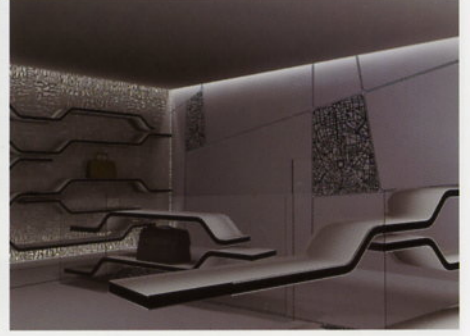
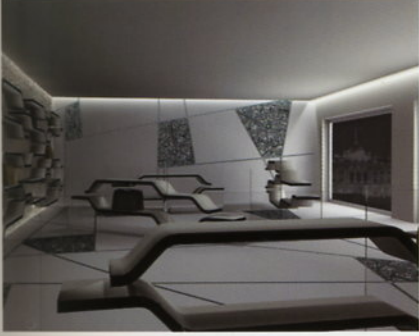
**Description**

Mandarina Duck – the renown brand since thirty years present and, nowadays, well-established on the market of bags and accessories production. Among all different possible ways of travelling the chosen option was to put on stage the metropolitan kind of journey, which – by plain, train or speedway – takes us around the big cities of the world. And is, in fact, an intricate net of speedways – at the junctions of which are the maps of ideal metropolis of our planet – the feature characterizing the surfaces of the spatial container,

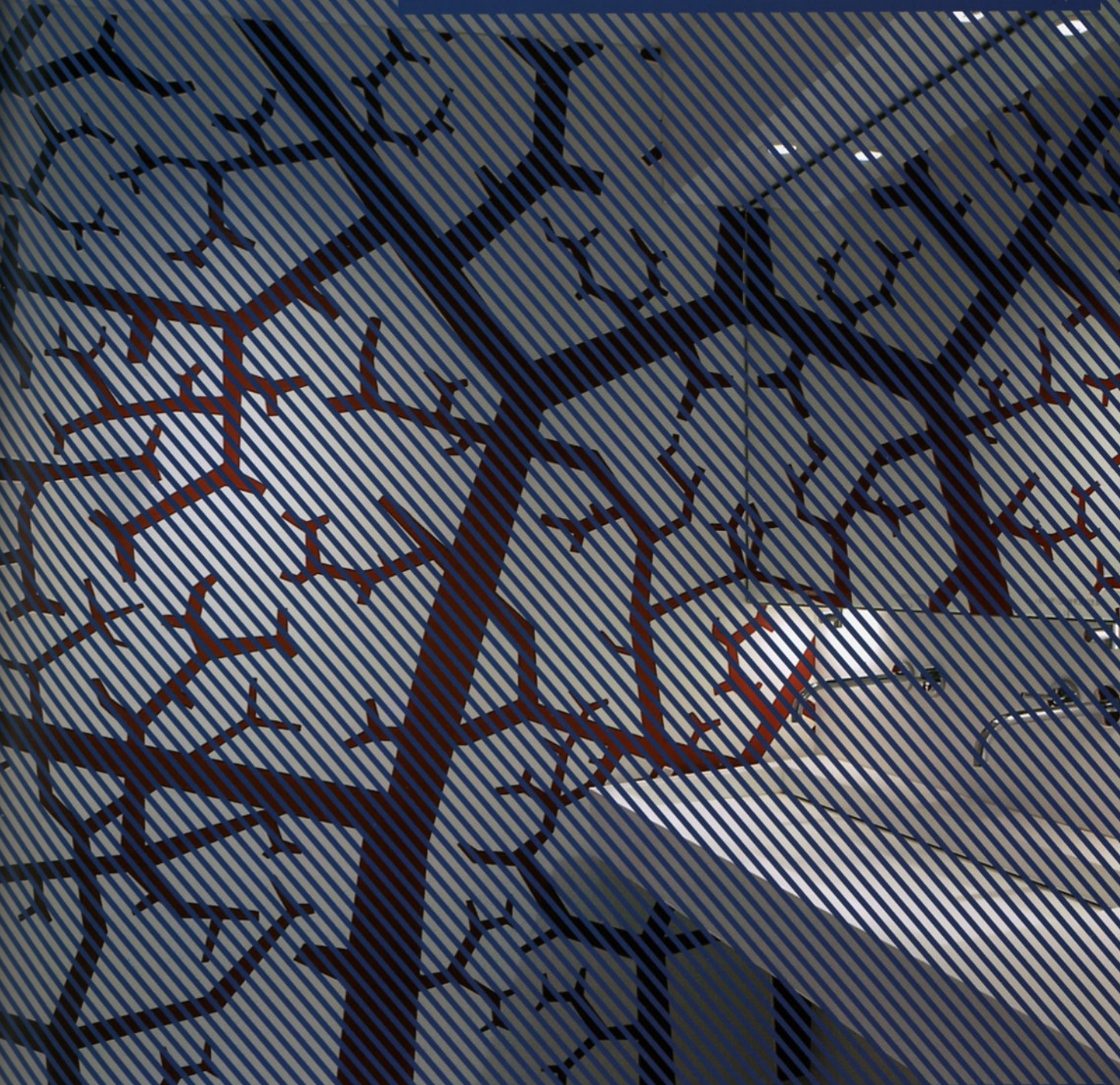
engraving them with a bas-relief effect (which – on the floor – will then be filled with a transparent resin) and suggesting the idea of an uninterrupted movement along the roads of the world. Along such routes are displayed a number of assemblable standing shelves, generated by different combinations of three simple modules: a long and a short shelf, and a double curve. Thanks to the two parallel and reciprocally slid sheets of glass supporting each shelf, they appear like they're freely fluctuating in the space, so giving an impression



of great lightness and granting a maximum visual transparency. The same shelving system is hung to the walls too, standing out against the background of a white lacquered and backlit aluminium trellis, out of which have been laser cut a mass of interlaced names of big cities of all countries. The particular sandwich-like construction of the shelves, while emphasizing the graphic character of this project, also strongly evokes the classic iconography of underground public transports maps.



# SHOP SHOW



Random mix to meet the different needs. Play your imagination to find their own style.

The 21st century is an era of rational consumption, the grade is not reflected in the increase in wealth, but deep in the heart of the concern needs to withstand that time, which is really valuable things.

When you use it, the function is a natural fit and contented; Not to be used, its artistic personality is immediately evident. the whole space there is a romantic aura.

**Description**

Olivomare is a restaurant serving seafood in London, reason why Pierluigi Pui used such peculiar decorative language using more or less clear references to the sea world and environment. The wide wall that characterizes the main dining room is entirely covered by a large cladding featuring a pattern inspired by the works of Maurits Escher. To counterpoint it, in the same room, there is a sequence of tubular luminescent tentacles evoking a stray shoal of jellyfishes or sea anemones. In the small dining room, the cladding is characterized by a wavy relief meant to evoke the sandy surface of the beach when moulded by the wind, while in the toilets lobby the intricate branches of a coral reef closes in around any visitor.

Olivomare is the last born belonging to the well known London brand OLIVO, and is a restaurant serving seafood. Apart from his name, such peculiarity is highlighted by the formal and decorative language adopted here to focus on its aspect using more or less clear references to the sea world and environment. The most explicit among them undoubtedly is the wide wall that characterizes the main dining room, entirely covered by a large cladding featuring a pattern inspired by the works of the visionary artist Maurits Escher, in which each single portion of colour is laser cut out of a sheet of opaque laminated plastic and juxtaposed on the vertical surface exactly as if it was a huge jigsaw puzzle.

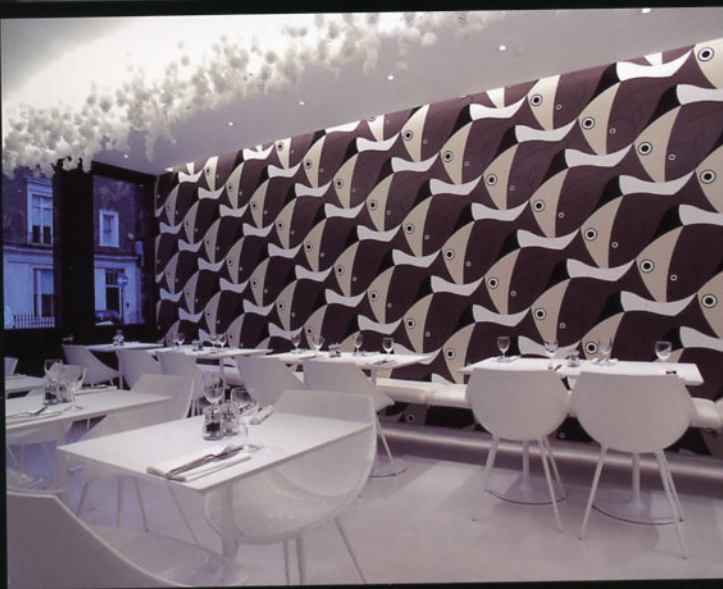




### Description

To counterpoint it, in this same room, from a channelling recessed in the fake ceiling drops down a linear sequence of tubular luminescent tentacles evoking a stray shoal of jellyfishes or of sea anemones, while in the wide lozenge glazed partition dividing this room from the entrance lobby somebody could vaguely recognize the meshes of fishers' nets. In the small dining room at the rear (flooded by natural daylight copiously dropping down through a wide skylight expressly open in its roof), the cladding of its only continuous wall – which also includes a large curve – is characterized by a wavy relief meant to evoke

the sandy surface of the beach when moulded by the wind, while in the toilets lobby the intricate branches of a coral reef closes in around any visitor coming from the bright and open adjacent room.–such peculiarity is highlighted by the formal and decorative language adopted here to focus on its aspect using more or less clear references to the sea world and environment. The most explicit among them undoubtedly is the wide wall that characterizes the main dining room, entirely covered by a large cladding featuring a pattern inspired by the works of the visionary artist Maurits Escher.







### Description

Such decorative pattern is obtained by engraving a double layer (white and red) of thick opaque laminated plastic laid onto either walls and ceiling, and its entanglement, when combined with the hidden doors giving access to the toilets, adds a sense of momentary disorientation to its aesthetical surprise. A sea of white

colour has been used to enhance and link all these elements, flooding all surrounding parts, from walls to ceiling, from the resin floor to the Corian made bar counter; a white sea working in this environment as an undifferentiated neutral background that intentionally disappoints any predictable expectation for blue colour.

